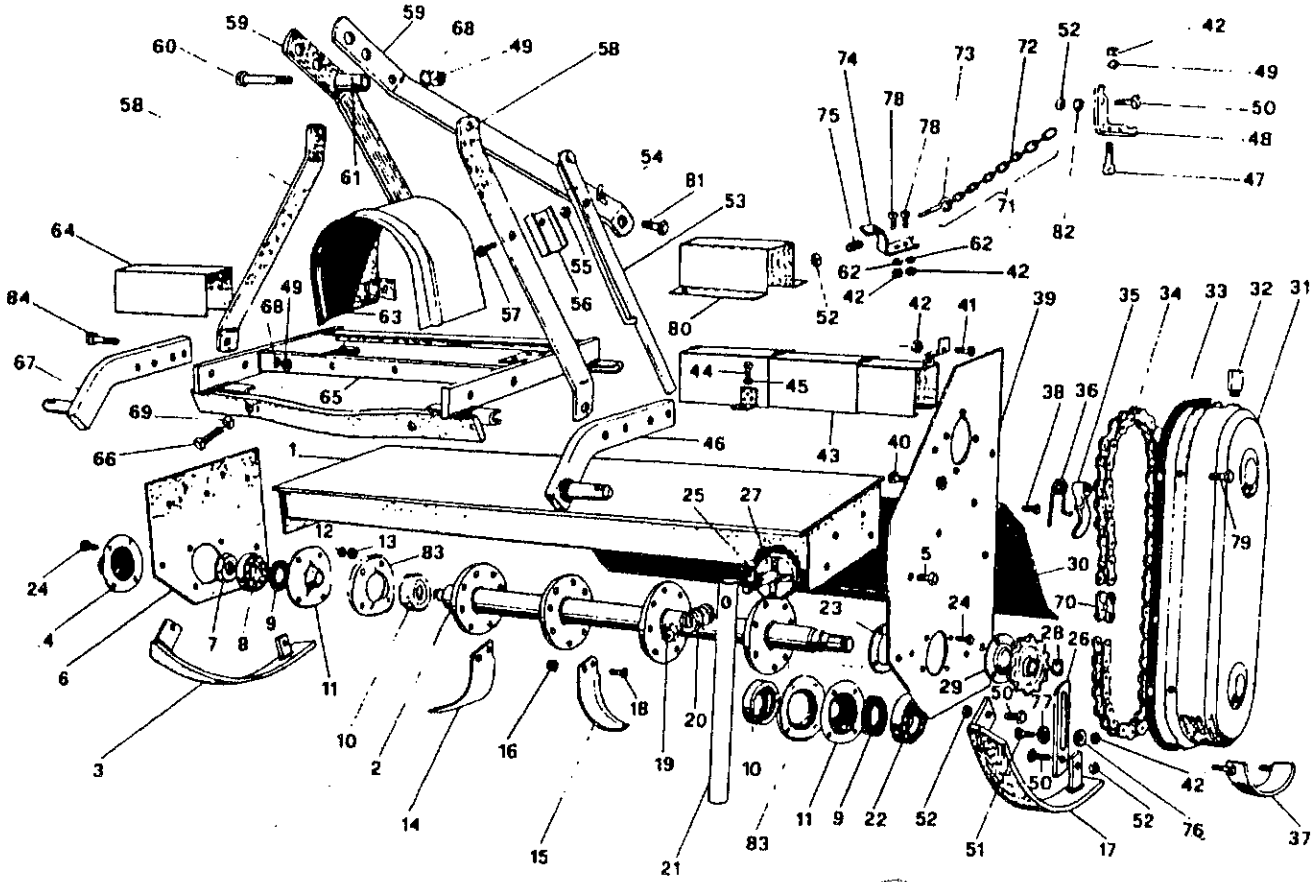




Rotary Tiller
Main Frame
11-1(34, 42, 50, 58)-231; 11-1(34, 42, 50, 58)-232

GR11
SR1

SR 1





Rotary Tiller

GR11

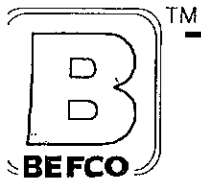
Main Frame

SR1

11-1(34, 42, 50, 58)-231; 11-1(34, 42, 50, 58)-232

ITEM	PART#	DESCRIPTION	QTY.
1	012 2002	MAIN FRAME - 134	1
	022 2002	MAIN FRAME - 142	1
	032 2002	MAIN FRAME - 150	1
	042 2002	MAIN FRAME - 158	1
2	013 4081	ROTOR - 134	1
	023 4081	ROTOR - 142	1
	033 4081	ROTOR - 150	1
	043 4081	ROTOR - 158	1
3	012 2051	SKID - RIGHT	1
4	003 0091	BEARING COVER - RIGHT	1
5	000 1241	BOLT M10 X 25	7
6	002 2011	RIGHT SIDE PANEL	1
7	003 0095	SAFETY NUT	1
8	003 0094	BEARING 6306	1
9	003 4098	OIL SEAL 40.60.10	2
10	002 2074	DIRT SHIELD	2
11	003 0092	BEARING COVER INNER	2
12	000 1011	LOCK WASHER M10	15
13	000 1010	NUT M10	15
14	003 0104D	C-KNIFE RIGHT	-
15	003 0104S	C-KNIFE LEFT	-
16	002 1105	NUT M12	-
17	022 2051	SKID - LEFT	1
18	002 1104	BOLT M12 X 30	-
19	003 0358	NUT M14	1
20	000 1176	JACK STAND SPRING	1
21	003 4324	JACK STAND	1
22	000 1061	BEARING 6307	1
23	003 4121	DISK WITH HOLES	1
24	000 1008	BOLT M10 X 30	8
25	003 6153	BOLT M14 X 70	1
26	002 1051	SERRATED ADJ. ARM	2
27	002 1004	JACK STAND HITCH	1
28	004 2122	SNAP RING M35 - EXT.	1
29	003 4122	BEARING COVER LEFT	1
30	012 3281	REAR SHIELD - 134	1
	022 3281	REAR SHIELD - 142	1
	032 3281	REAR SHIELD - 150	1
	042 3281	REAR SHIELD - 158	1
31	002 2031	CHAIN CASE COVER	1
32	003 4044	BREATHER CAP	1
33	002 2032	GASKET	1
34	003 4141	CHAIN ASA 80 X 36	1
35	003 0148	CHAIN TENSIONER	1
36	003 0158	CHAIN TENSIONER SPRING	1
37	002 2035	CHAIN PAN PROTECTION	1
38	000 7519	BOLT M14 X 70	2
39	002 2021	LEFT SIDE PANEL	1
40	003 0155	BOLT M10 X 60	1
41	000 1101	BOLT M10 X 45	1

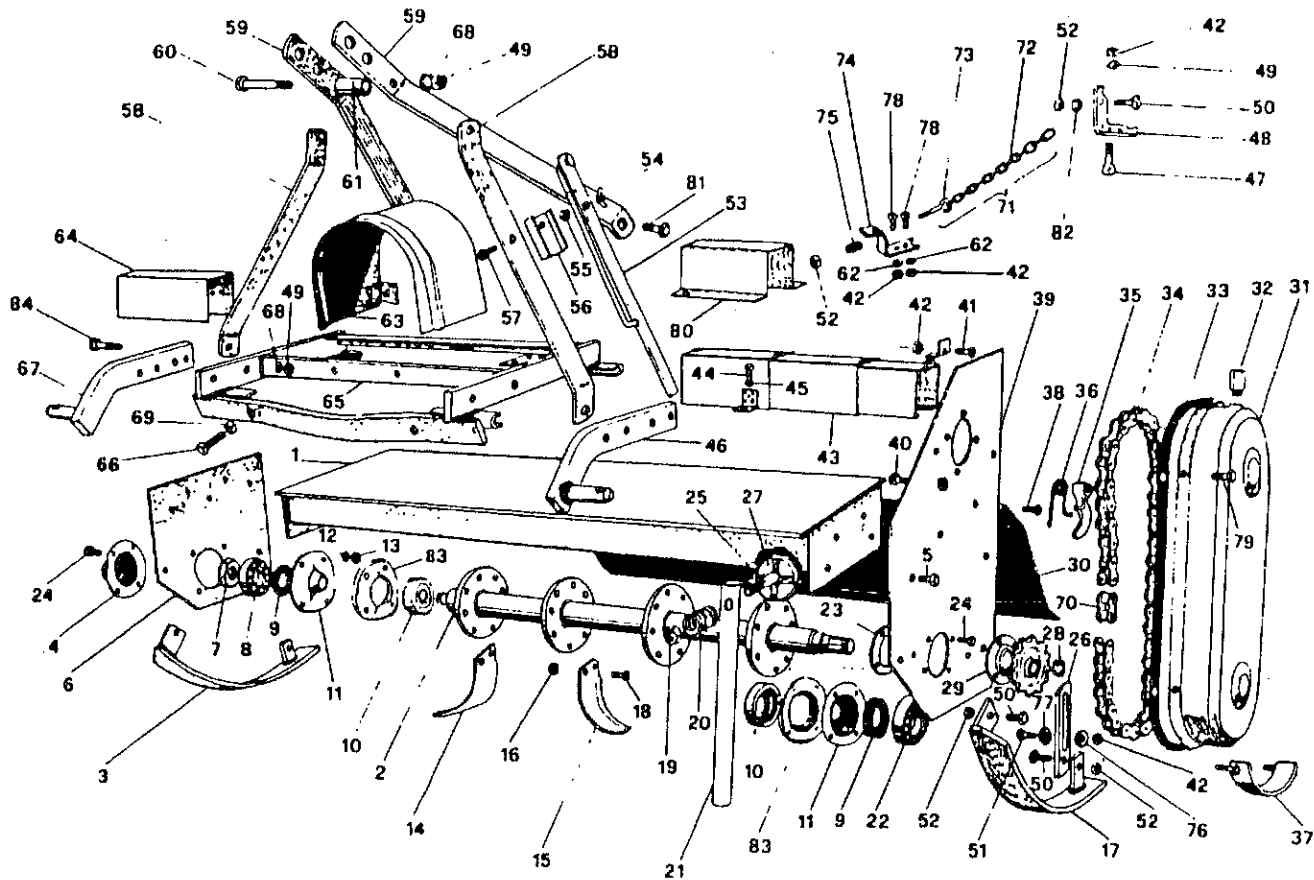
001-0035
00B-4106
m10 nut



Rotary Tiller
Main Frame

GR11
SR1

11-1(34, 42, 50, 58)-231; 11-1(34, 42, 50, 58)-232





Rotary Tiller

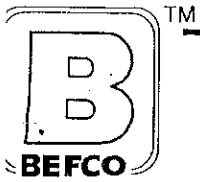
GR11

Main Frame

SR1

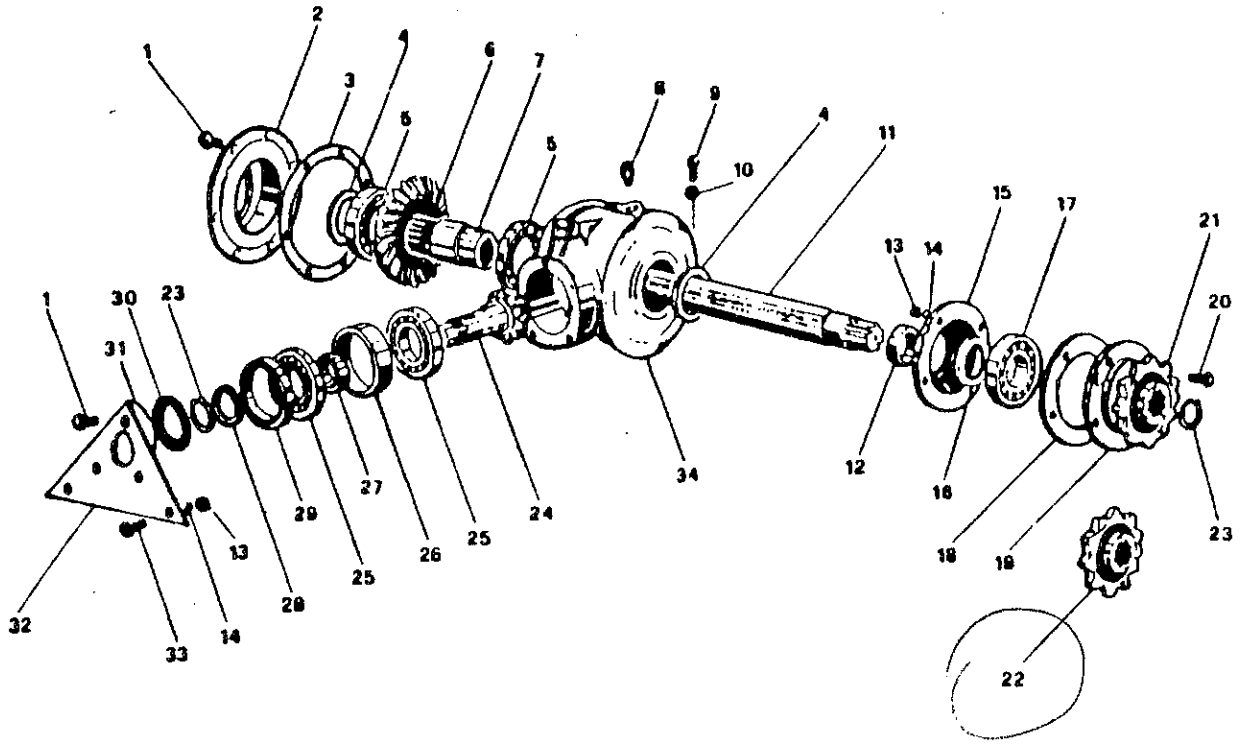
11-1(34, 42, 50, 58)-231; 11-1(34, 42, 50, 58)-232

ITEM	PART#	DESCRIPTION	QTY.
42	000 1279	NUT M10	6
43	012 1253	COVER COUNTER SHAFT 134-142	1
	022 1253	COVER COUNTER SHAFT 150-158	1
44	000 6349	BOLT M10 X 20	2
45	000 2034	LOCK WASHER M10	2
46	023 4261	LOWER HITCH PLATE LEFT	1
47	003 0334	BOLT M10 X 55	1
48	003 0321	CHAIN HITCH	1
49	000 3038	NUT M12	10
50	000 1278	BOLT M10 X 30	5
51	002 6329	BOLT M10 X 45	2
52	003 0156	NUT M10	4
53	001 0342	RATCHET ARM	1
54	000 1807	WING NUT M8	1
55	000 1806	NUT M8	1
56	003 0339	LOCKING COVER	1
57	000 8037	BOLT M8 X 50	1
58	003 4273	TOP HITCH SUPPORT	2
59	003 4272	TOP HITCH ARM	2
60	003 4286	BOLT M12 X 100	1
61	002 1285	SPACER	1
62	000 1280	LOCK WASHER M10	2
63	003 4355	PROTECTIVE COVER	1
64	013 0260	RIGHT PROTECTION 134-142	1
	023 0260	RIGHT PROTECTION 150	1
	033 0260	RIGHT PROTECTION 158	1
65	003 4241	SIDE SHIFT COMPLETE	1
66	002 2279	BOLT M12 X 60	-
67	013 4261	LOWER HITCH PLATE RIGHT	1
68	000 1077	LOCKWASHER M12	7
69	000 1106	NUT M12	2
70	003 4450	CHAIN LINK #80 ROLLER	1
	003 4151	CHAIN LINK INNER	1
	009 1206	FALSE CHAIN LINK	1
71	001 0317	CHAIN COMPLETE	1
72	001 0318	CHAIN	1
73	002 1304	LIFTING HOOK	1
74	002 1306	CHAIN HITCH	1
75	002 1315	SPRING	1
76	002 1053	WASHER WITH HOLE	2
77	002 1052	WASHER WITH THREAD	2
78	003 3176	BOLT M10 X 25	2
79	000 1046	BOLT 10 X 20	10
80	002 2270	LEFT PROTECTION	1
81	009 1495	BOLT M12 X 80	1
82	003 0157	WASHER	1
83	001 0073	EXT. COVER	2
84	002 1257	BOLT M12 X 60	2
	003 0054	BOLT M12 X 50	2



Rotary Tiller
Gear Box
11-1(34, 42, 50, 58)-231; 11-1(34, 42, 50, 58)-232

GR11
SR1





Rotary Tiller

GR11

Gear Box

SR1

11-1(34, 42, 50, 58)-231; 11-1(34, 42, 50, 58)-232

ITEM	PART#	DESCRIPTION	QTY.
1	000 1046	BOLT M10 X 20	7
2	002 1171	GEAR COVER	1
3	002 1173	GASKET	1
4	000 2133	OIL SEAL 50.68.10	2
5	003 4178	BEARING 6010	2
6	002 1176	BEVEL GEAR	1
7	003 4175	SHAFT COUPLING	1
8	000 1107	BREATHER CAP	1
9	000 1043	BOLT M12 X 35	1
10	000 2038	LOCK WASHER M12	1
11	013 4166	HEXAGONAL SHAFT 134	1
	023 4166	HEXAGONAL SHAFT 142	1
	033 4166	HEXAGONAL SHAFT 150	1
	043 4166	HEXAGONAL SHAFT 158	1
12	000 2049	SPACER	1
13	000 1010	NUT M10	6
14	000 1011	LOCK WASHER M10	6
15	003 0092	BEARING COVER INNER	1
16	003 4159	OIL SEAL 45.60.10	1
17	000 1061	BEARING 6307	1
18	003 4121	DISK WITH HOLES	1
19	003 4122	BEARING COVER OUTER	1
20	000 1008	BOLT M10 X 30	3
21	003 4134	SPROCKET Z11 STANDARD X	1
	003 4136	SPROCKET Z10	1
	002 1120	SPROCKET Z9	1
22	003 4131	SPROCKET Z14 STANDARD X	1
	003 4138	SPROCKET Z15	1
	002 1118	SPROCKET Z16	1
23	004 2122	SNAP RING M35 EXT.	1
24	002 1177	PINION GEAR	1
25	002 5332	BEARING 6207	1
26	003 4197	SPACER-REAR OUTER	2
27	003 4198	SPACER-REAR INNER	1
28	003 4196	SPACER-RING	1
29	002 2189	SPACER-FRONT	1
30	000 2295	OIL SEAL 35.62.10	1
31	000 7181	GASKET OIL 740	1
32	003 4204	METAL COVER	1
33	000 1608	BOLT M10 X 40	2
34	002 1163	GEAR BOX HOUSING CAST	2
	050 0510	GEAR BOX COMPLETE CAST	-

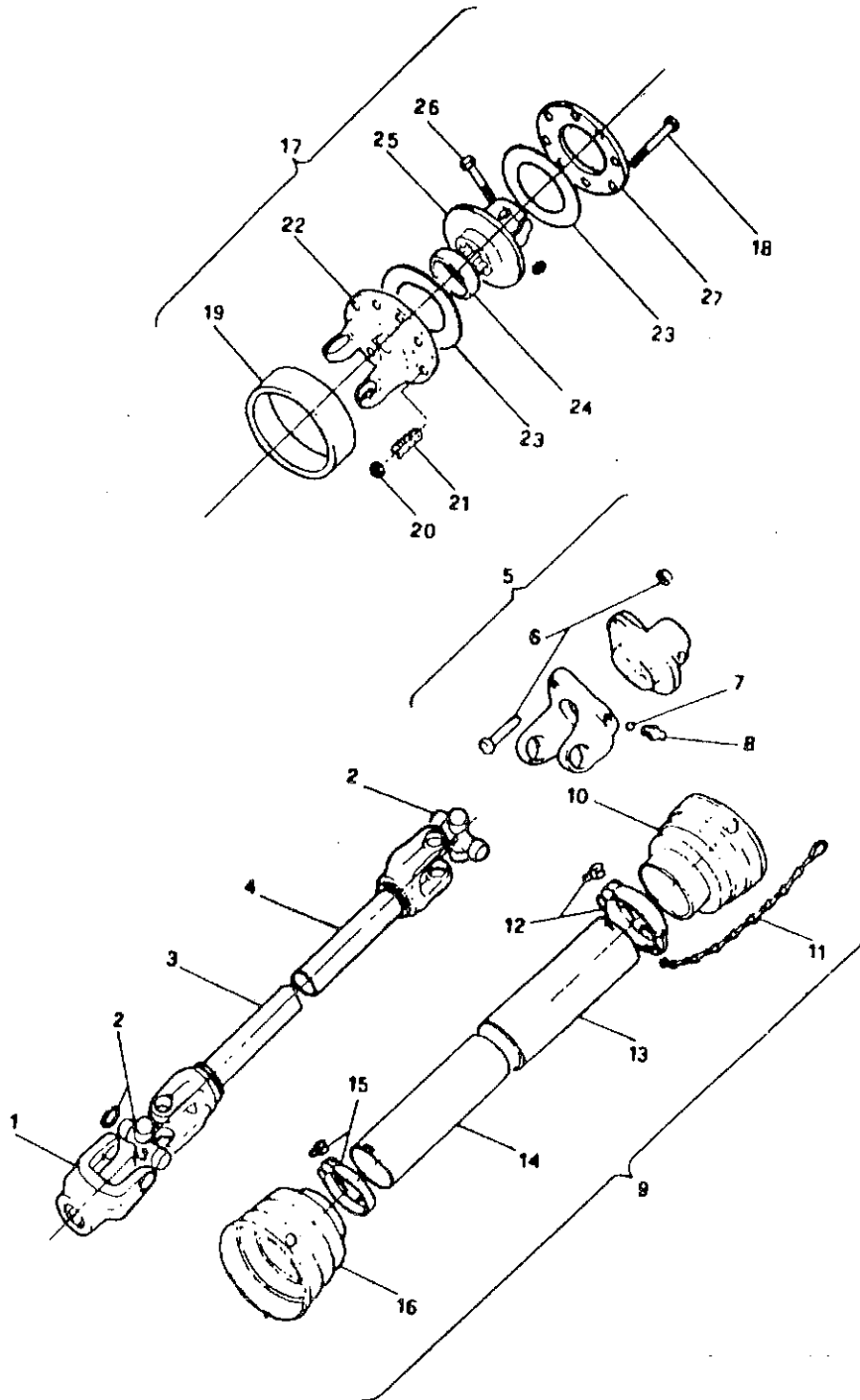


TM

Rotary Tiller
PTO

GR11
SR1

11-1(34, 42, 50, 58)-231; 11-1(34, 42, 50, 58)-232





Rotary Tiller

GR11

PTO

SR1

11-1(34, 42, 50, 58)-231; 11-1(34, 42, 50, 58)-232

ITEM	PART#	DESCRIPTION	QTY.
1	024 001E	YOKE TRACTOR END 1 3/8 - 6	1
2	014 130E	CROSS AND BEARING 27 X 74.6	2
3	140 109E	SHAFT ONLY - MALE	1
	014 007E	YOKE ONLY - MALE	1
	000 012E	ROLL PIN 8 X 55	1
4	140 209E	SHAFT ONLY - FEMALE	1
	014 006E	YOKE ONLY - FEMALE	1
	000 013E	ROLL PIN 8 X 60	1
5	240 001E	YOKE SHEAR PIN	1
6	000 505E	SHEAR BOLT WITH NUT 8 X 50	1
7	000 022E	BALL BEARING	18
8	000 020E	GREASE FITTING	1
9	240 209E	SHIELD COMPLETE	1
10	013 016E	GUARD CONE OUTER	1
11	016 025E	SAFETY CHAIN	2
12	013 012E	LOCKING COLLAR OUTER	1
13	141 109E	TUBE - FEMALE	1
14	141 209E	TUBE - MALE	1
15	013 011E	LOCKING COLLAR INNER	1
16	013 015E	GUARD CONE INNER	1
17	241 002E	SLIP CLUTCH YOKE COMPLETE	1
18	000 501E	BOLT M10 X 80	8
19	014 021E	DIRT SHIELD	1
20	001 5237	NUT SELF LOCK M10	8
21	014 022E	SPRING	8
22	014 017E	YOKE	1
23	014 019E	FRICTION DISK	2
24	015 020E	SPACER	1
25	014 018E	BODY FRICTION CLUTCH	1
26	000 502E	BOLT M12 X 65 WITH NUT	1
27	014 020E	OUTER FLANGE	1
	026 004E	PUSH PIN SET (PRESS IN RETAINER)	-
	026 009E	PUSH PIN SET ("C" CLIP RETAINER)	-
	948 301B	PTO COMPLETE T40 SHEAR PIN	-
	948 302B	PTO COMPLETE T40 SLIP-CLUTCH	-